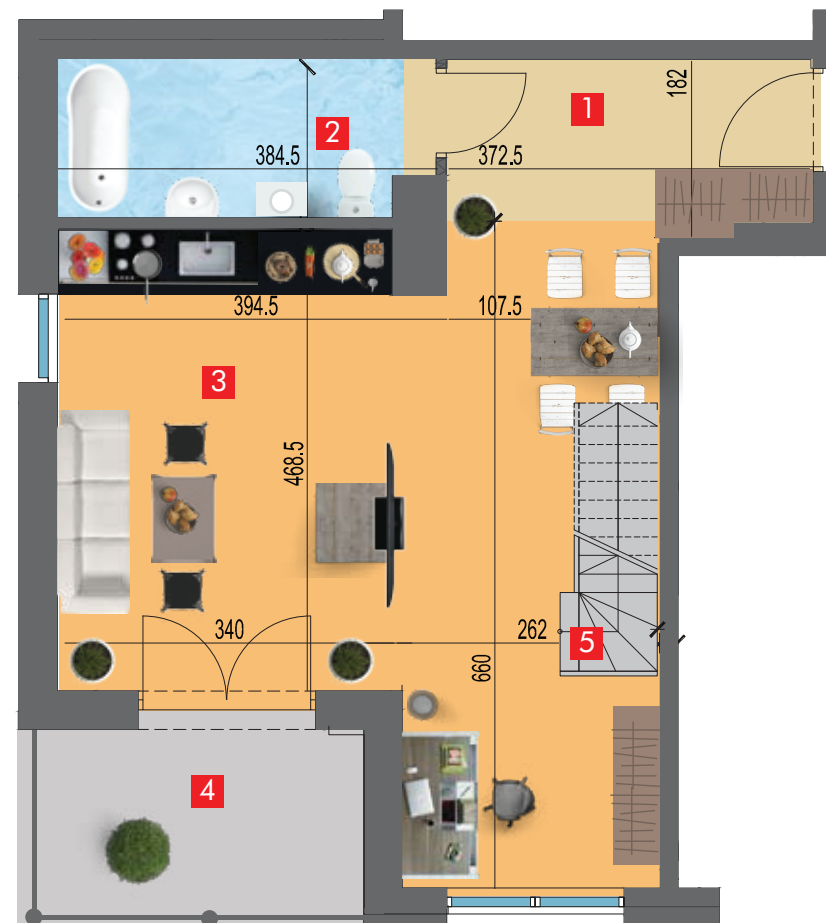
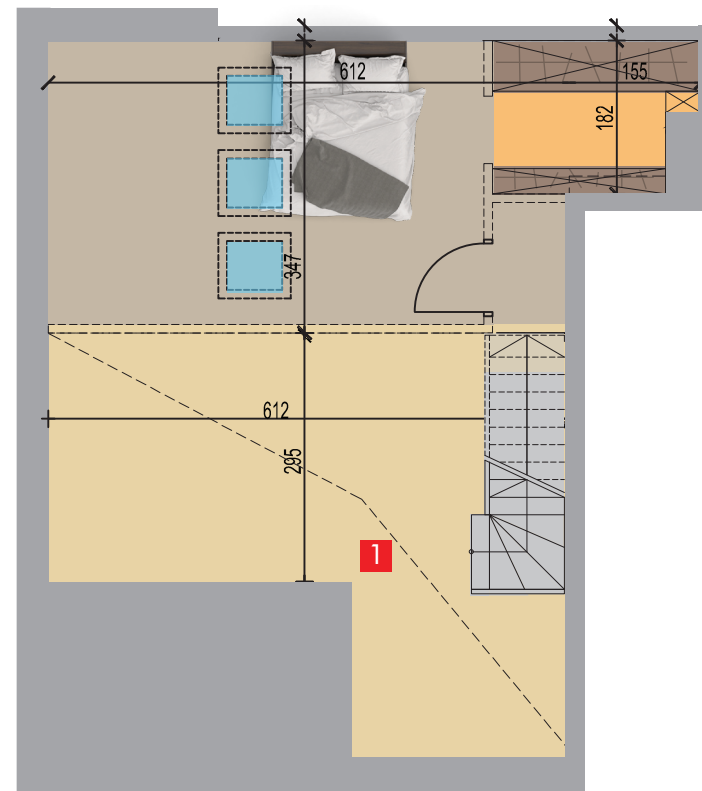
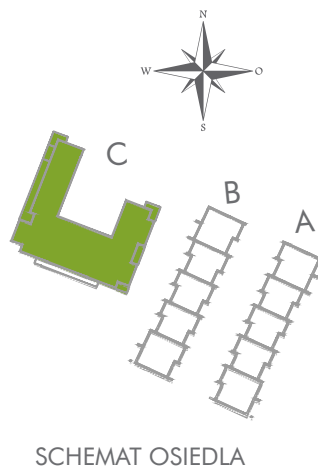
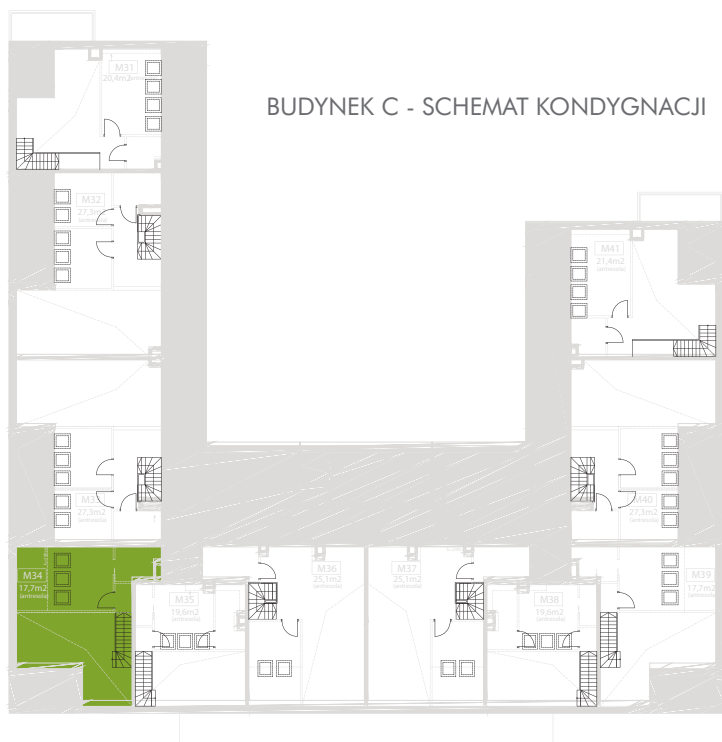


<b>1</b>	Przedpokój	7,9 m <sup>2</sup>
<b>2</b>	Łazienka	5,9 m <sup>2</sup>
<b>3</b>	Pokój dzienny z aneksem kuchennym	31,6 m <sup>2</sup>
<b>4</b>	Balkon	6 m <sup>2</sup>
<b>5</b>	Antresola	17,7 m <sup>2</sup>



MIESZKANIE M34 63,1 m<sup>2</sup>



**1** Antresola

17,7 m<sup>2</sup>

MIESZKANIE M34

63,1 m<sup>2</sup>