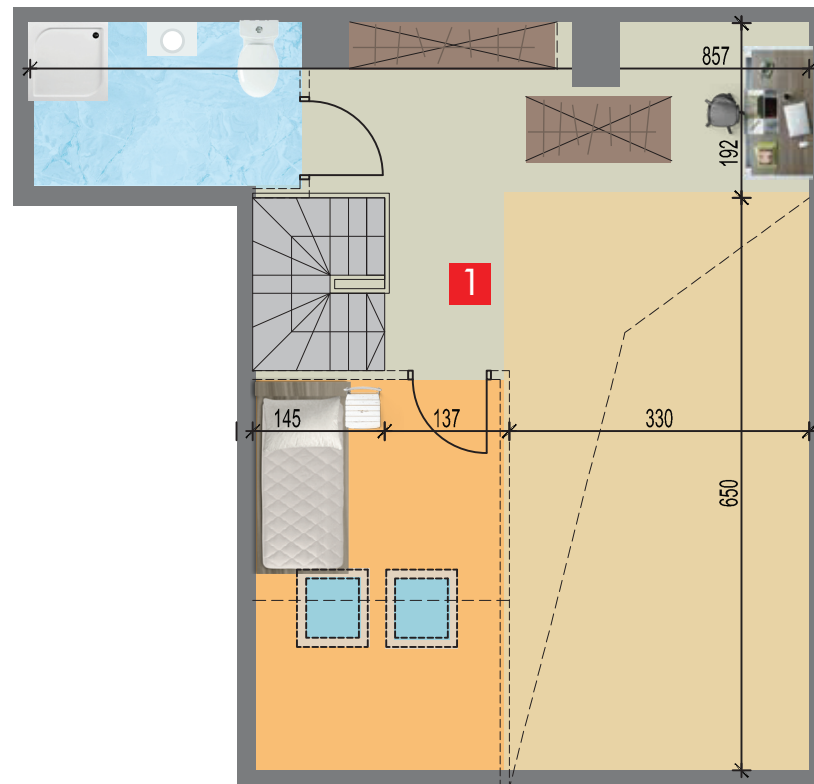
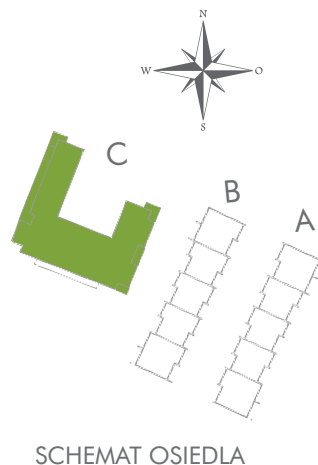
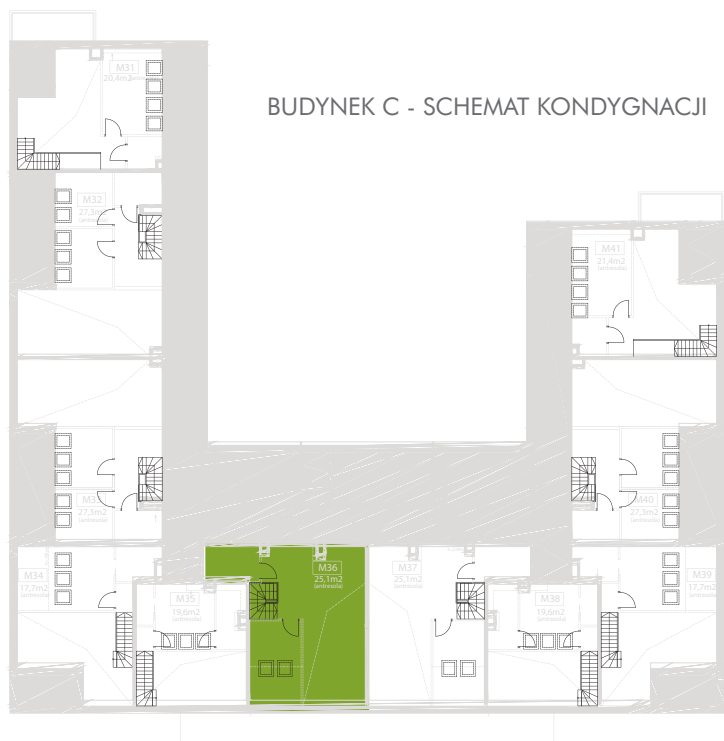


| | | |
|----------|-----------------------------------|---------------------|
| 1 | Przedpokój | 10,2 m ² |
| 2 | Łazienka | 5,2 m ² |
| 3 | Pokój dzienny z aneksem kuchennym | 25,1 m ² |
| 4 | Sypialnia | 12,3 m ² |
| 5 | Balkon | 9,5 m ² |
| 6 | Antresola | 25,1 m ² |

MIESZKANIE M36 | 79,1 m²



1 Antresola

19,6 m²

MIESZKANIE M36

79,1 m²