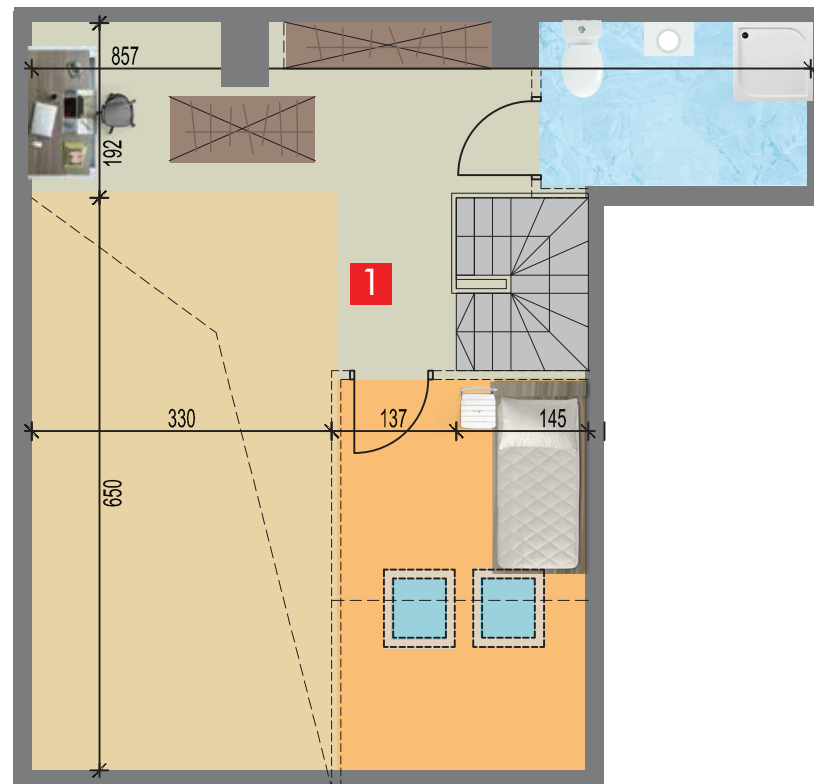
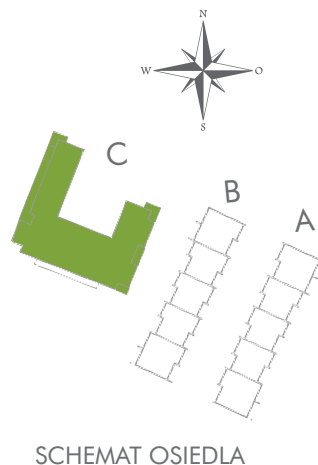
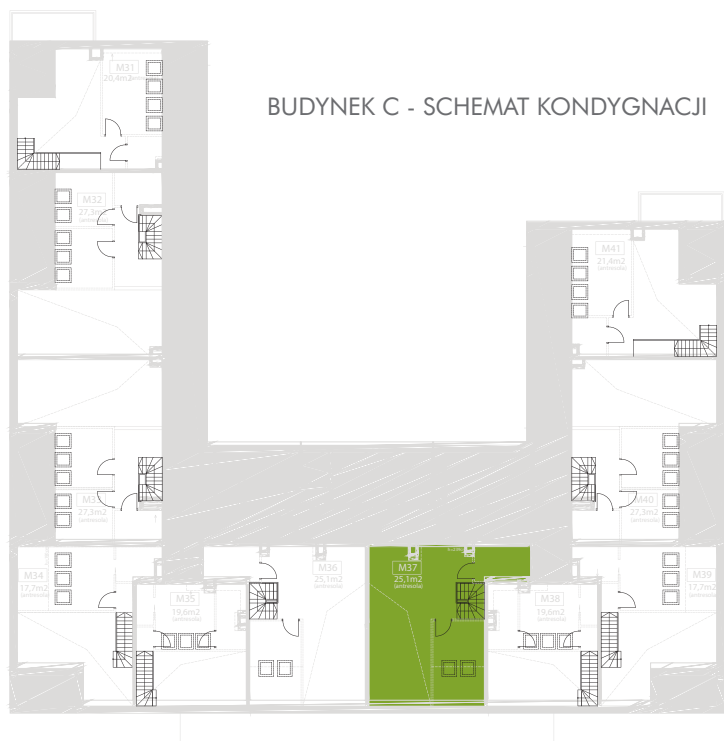


1	Przedpokój	10,2 m ²
2	Łazienka	5,2 m ²
3	Pokój dzienny z aneksem kuchennym	25,1 m ²
4	Sypialnia	12,3 m ²
5	Balkon	9,5 m ²
6	Antresola	25,1 m ²

MIESZKANIE M37

79,1 m²



1 Antresola

19,6 m²

MIESZKANIE M37

79,1 m²